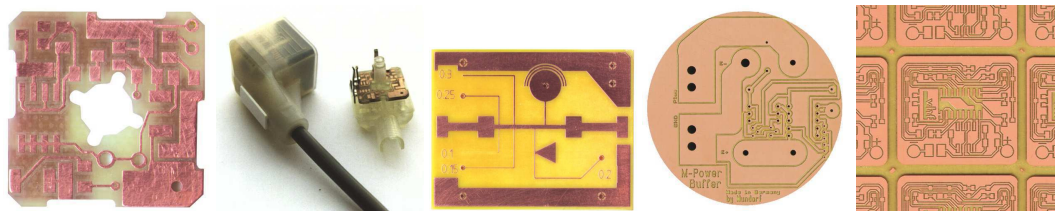


2.6 Prototyping of Circuit Boards (PCB)

This tutorial describes the process of making a double sided circuit board. The steps include export of all data from your PCB layout software, importing the data, engraving the insulations, drilling, cutting of the contour, etc.



When editing with Cenon, there are often several ways to achieve the same thing. In this tutorial we will try to point out some of the different approaches, even if it makes the tutorial a little longer.

2.6.1 Export

Before you can start, you have to export the data of both layers, the drill data, and the contour of the board. The following table recommends export formats.

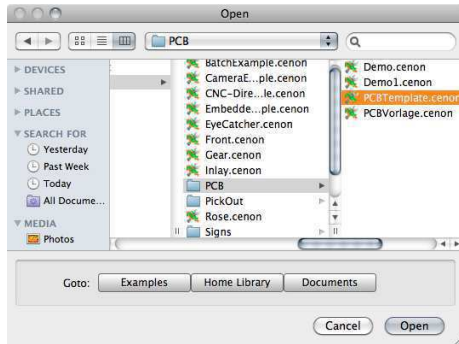
Data	File Format
Layers	Gerber, EPS
Drill Data	Excellon, Sieb&Meyer
Contour	Gerber, EPS, HPGL
Logo/Text	Gerber, EPS, HPGL

If possible, you can include the Contour Layer on the Soldering Layer. This will save you one Import step.

2.6.2 First Steps

We start by opening the template file "PCB-Template.cenon" from the path "/Library/Application Support/Cenon/CAM/Jobs/PCB". You can use the Open-Panel (Menu:

File▷Open...), and click the Goto-button "Examples" to jump to the Cenon-Library.



The Template file is a rather empty document. All you can see is two fitting pins. However, almost all settings, you possibly need to make a circuit board are prepared for you. Using the Template saves a lot of time.

Document Size

The Template Document provides a file size appropriate for boards of up to about 160x100 mm. You can change the Working Area in the Working-Area Panel to fit your layout, Menu: "Format▷Working Area ..." (See section 3.3.2).



Save a Copy

Now, before you do anything else, save your document with a new name !

From the Menu pick, File▷Save As ... The Save-Panel appears and lets you chose a location and Name for the file. We recommend to save files to your private Library- or Documents folder "HOME/Documents/Cenon/Projects".

The Layers

The PCB Template provides all layers you may need to assemble single- or double-sided circuit boards. The following table gives an overview of the layers provided by the Template.

Layer	Purpose	Source	Tool
Contour	The contour of the board. This layer is cut out and has to provide a filled object (Path, Rectangle, Circle).	Imported in EPS or Gerber, format, or created in Cenon.	PCB Cutter
Soldering	The Soldering Layer. This layer provides the soldering data and calculates the insulation engraving.	Imported, usually as Gerber file	Insulation Graver
Blow-Up	Widens the insulation channels to make soldering easier. The channels will only be widened where the distance allows widening.	Calculated from data on Soldering Layer	Rub-Out Cutter
Rub-Out	Areas wherein all surplus copper is removed. This layer has to provide a closed shape covering part of the board. If you rub-out the entire board no Blow-Up is needed.	usually created in Cenon	Rub-Out Cutter
Component	For double sided boards. This layer calculates the insulation engraving.	Imported, usually as Gerber file	Insulation Graver
Blow-Up	Widens the insulation channels.	Calculated from Component Layer	Rub-Out Cutter
Rub-Out	Areas wherein all surplus copper is removed.	created in Cenon	Rub-Out Cutter
Fitting Pins	Fitting pins are needed for double-sided boards only. They help to flip the board before machining the Component Layer.	modified in Cenon	Drill

Additional layers can be added as you see fit, for example a layer to engrave a logo. For Drill Data a new layer can be created automatically for each imported drill diameter.

The tools will be explained in detail before we start machining.

2.6.3 Import

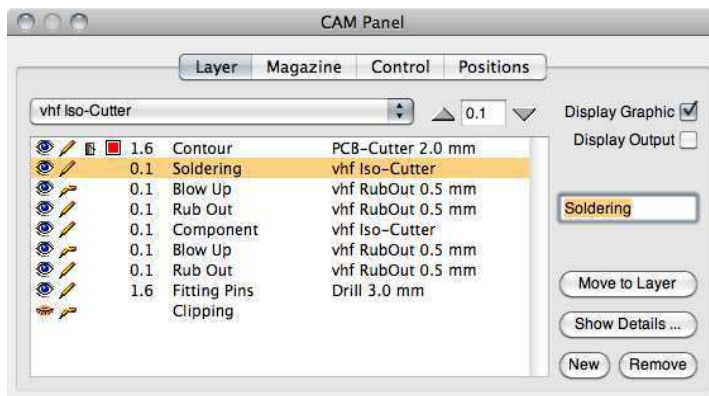
After the data is prepared and the template document is loaded, we can now import the various files to their layers.

This tutorial is using the Example files from the folder ”/Library/Application Support/Cenon/Examples/Demo2”. The board we are prototyping serves as the LED board of a well-known CNC-Controller:



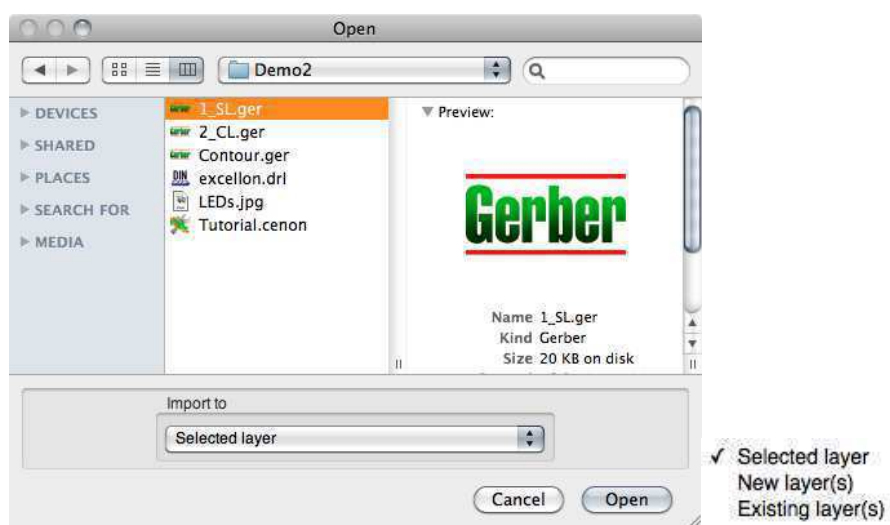
Import Soldering Layout

Please go to the CAM-Panel and pick the Tab ”Layer”, which brings you to the layer management. Now select the Layer to which you want to import. In our case this is the Soldering Layer. The Panel should look like below with the Soldering Layer selected.





When the layer is selected, go to the File-Menu and pick File▷ Import. The Import-Panel (below) appears. Here you can choose the data file providing the soldering data. In our example this is SL.ger, a Gerber file (RS 274 X).

In the Pop-Up Menu in the lower part of the Import-Panel, you can choose an import location. We want to import to the "Selected Layer". That's why we selected the layer within the Layer-Panel.



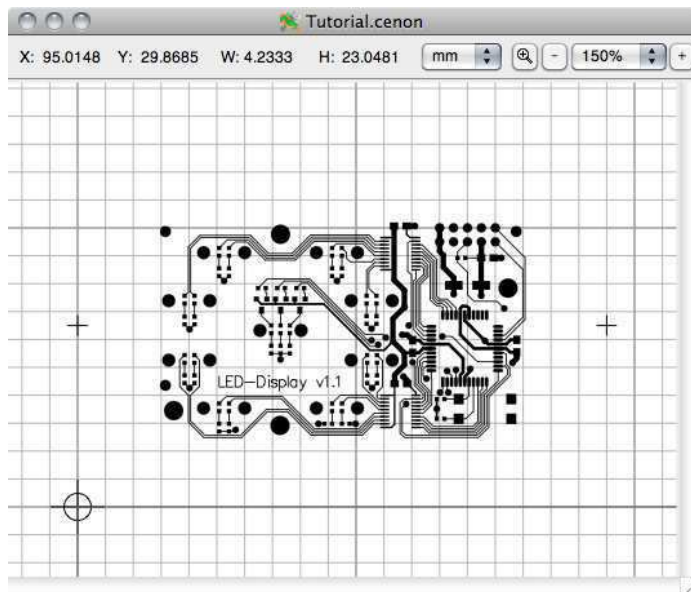
After you press the button "Open", the file will be imported to the selected layer, the Soldering Layer.

Tip: There are other ways to import a file, for example, it is also possible to move the Gerber-File from the Finder window into the Canon document. The file will then end up on the first visible (open eye ) and editable (pencil ) layer (from the top of the layer list).

You can now move the imported file to a better location within the document. We strongly recommend that you set a grid to make it easier to handle the imported data. You can use the Grid-Panel (Menu Format▷ Grid▷ Set ...) to set a grid of lets say 1/10 Inch.

Tip: If you group your layer (select all elements of the soldering layer and pick `Edit ▸ Group` from the Menu), you can grab the entire group at any desired pad and move this pad to the grid. The entire group follows and is now aligned to the grid !

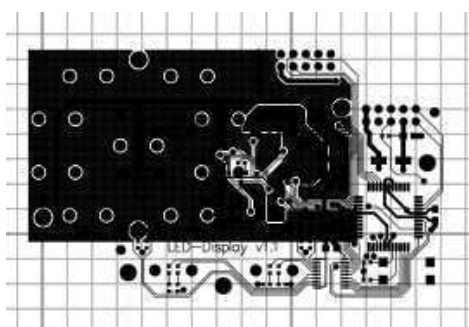
After this step your Document should look something like the following:



Import and Alignment of Component Layer

The Component Layer is imported in the same way. In the Layer-Panel select the Component Layer. Then open the Import-Panel and pick the data that should go to the Component Layer.

This could end-up something like this:



The Component Layer might end up in a different position than the Soldering Layer. Of course, we need both layers fit exactly on top of each other, which is easy to do. You have several options:

1. Make sure all data of the Component Layer is grouped (Select all elements and go to the Menu: Edit▷Group).
Grab one Pad from the Component Layer and move the entire group on top of the soldering layer. The group will snap (at the position of the pad you grabbed it) to the grid and to elements of the soldering layer.

2. Before you use this way of aligning layers, make sure you are able to select elements on non-editable layers. If you can't, go to the Preferences (Menu: Canon▷Preferences...). In the General Preferences check the switch "Selection of non-editable layers".

Now make sure neither the Soldering Layer nor the Component Layer is grouped (Select the elements on each layer and pick Edit▷Ungroup). Otherwise you are not able to select a single element, which we have to do.

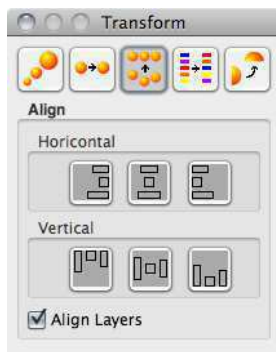
Make sure the Soldering Layer is not editable (broken pencil in Layer-Panel). This means, the other layer will be moved later to fit on this one.

On the Soldering Layer, select a pad that is also available on the Component Layer. Select the same Pad on the Component Layer.

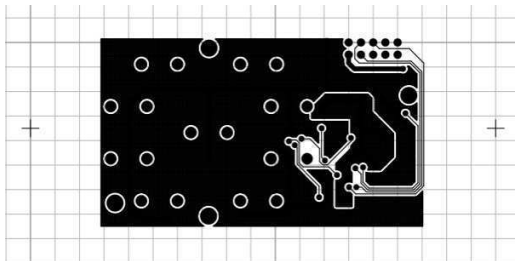
Open the Transform Panel from the Menu: Tools▷Transform Panel ... and click the Align Icon on top of the Transform Panel.

Make sure the "Align Layers" Switch is active !

Now align Horicontally and Vertically by pressing the center Icons of both rows.



Now, both layers are perfectly aligned:



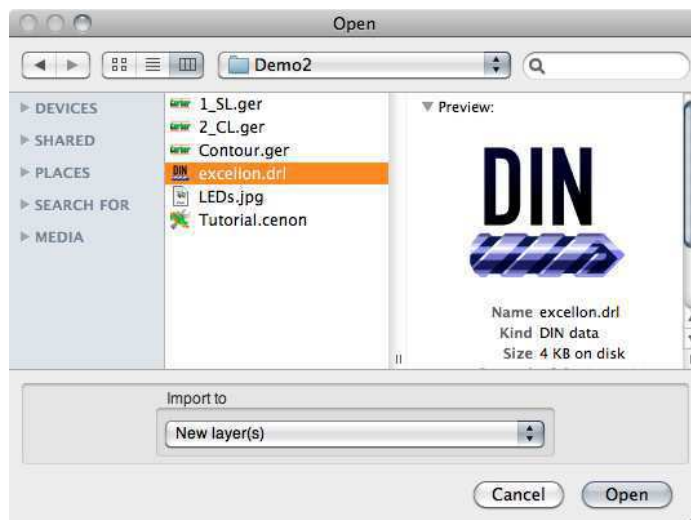
Tip: To avoid moving elements accidentally, we should protect the layer by making it non-editable. If you click on the pencil icon of the layer, the pencil will be broken and the layers can't be edited any more.

Import Drill Data

We can load drill data from several different formats, like Excellon, or Sieb&Meyer. In most cases the format will be recognized automatically. Other formats based on the ISO, DIN, G-Code standard should work as well.

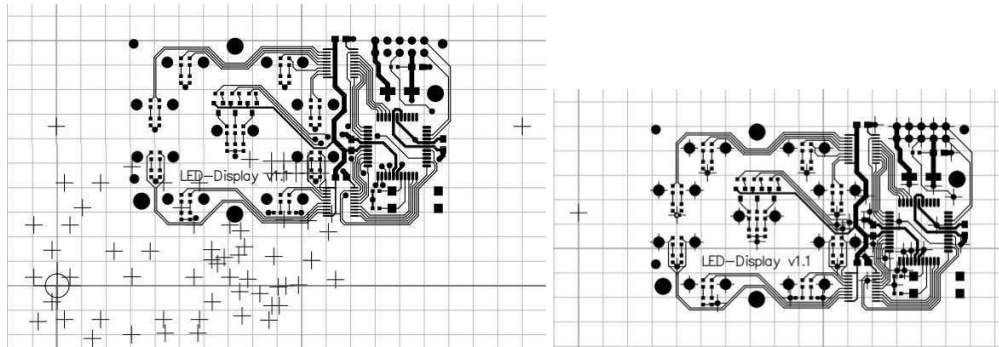
Open the Import-Panel (Menu: File▷ Import) and pick your drill file. The file needs the extension .drl to be displayed.

In the Pop-Up menu in the lower part of the Import-Panel select "New layer(s)". This will make sure we get a new layer for each tool (drill diameter). Every layer gets an appropriate name including the diameter of the drill.

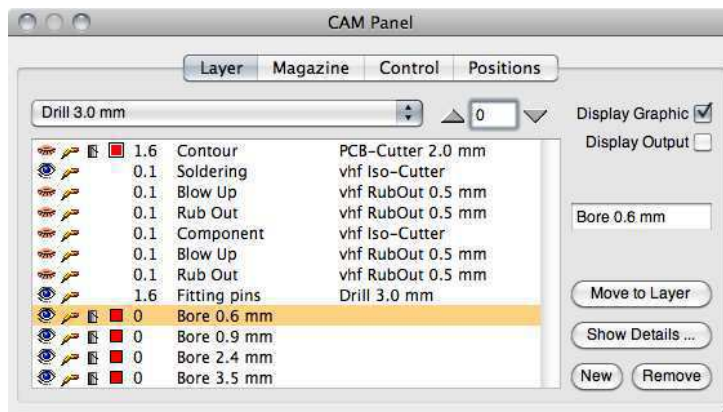


Again it can happen that the drill data is not aligned with the rest of our layout. In the same way as we have learned for the component layer, we can now align the drill data of each drill-layer with the Soldering Layer.

The images show our drill data before and after alignment.

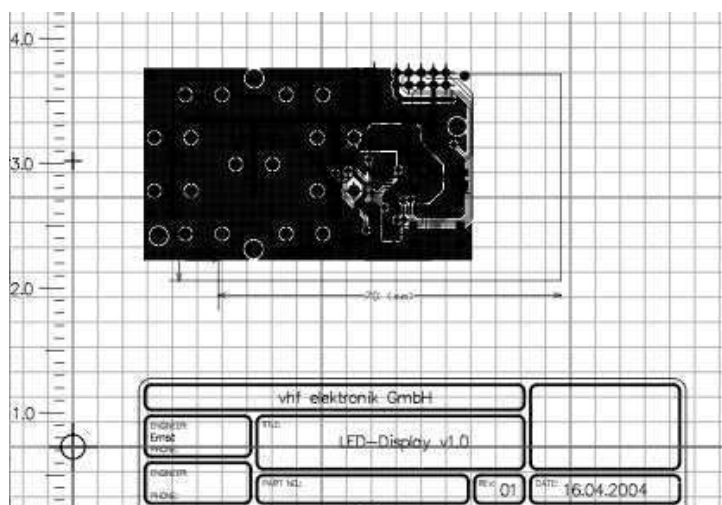


And this is how the Layer-Panel looks like. There are 4 more layers with the drill diameters.



Import and Editing of Contour Data

We only have the contour left to do. Let's try a different approach. Make sure the Contour Layer (top layer in the layer list) is editable. In the Finder window, locate the Contour file and drag it into your document. Voila:



But ouch, there is a lot of stuff, we don't need. All we need is the rectangle. Some elements are not even in our working area, hmm. No big deal.

Select the group that has been imported by clicking on any element of the Contour Layer.

Go to the menu and pick Edit > Ungroup (or Cmd-Shift-G). All ungrouped elements stay selected.

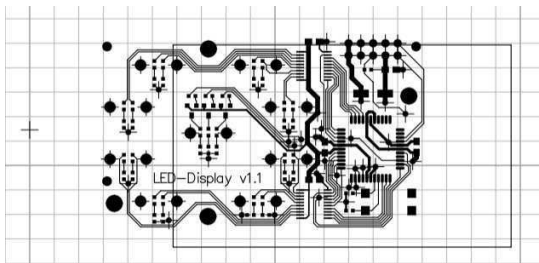
Now, while holding the Shift key pressed, select the lines forming the contour (or use Shift and the Drag-Select). This will deselect the elements of the contour. If you hide all other layers (close the eye) this is easy to do.

All elements that are still selected can go. Simply press the Backspace key and these elements are gone. All that's left now is your contour elements.

Tip: If you accidentally lose the selection after the ungroup, you can always use "Edit > Select All" to select all elements on visible (editable) layers, even

elements outside the working area. You don't have to adjust the size of the working area to fit all elements. Make sure only elements on the layer(s) you want are being selected.

What we have now should look something like the following. Our contour layer is not aligned and consists of four single lines. What we need is a closed path or a rectangle.



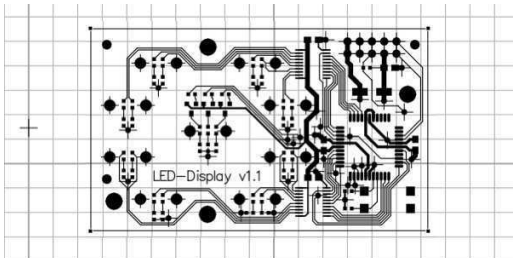
To turn the single elements into a Path, we first select all of them. We will show two ways how to select all off the single elements.

1. While keeping the Shift key pressed, click every single line once until all are selected (knobs are displayed). You can also use the Drag-Select.
2. Hide all layers except the Contour Layer and pick Edit ▸ Select All.

Then go to the Menu and pick Edit ▸ Join.

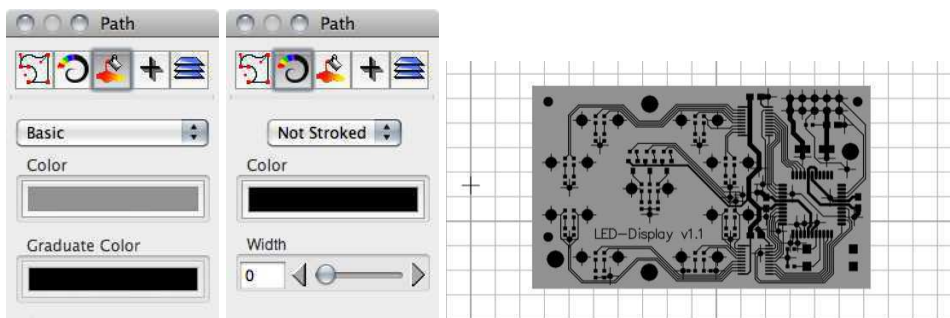
Tip: We can test if we did a good job by deselecting the Path (click beside the Path) and then selecting it again. If something is not selected or the Menu item Edit ▸ Select All is still active, then we have to join the missing elements too.

Next we align the contour layer by moving it to the grid or use the Transform-Panel to center it.



We are not done yet. We have to fill the contour to allow the tool radius compensation to do its job.

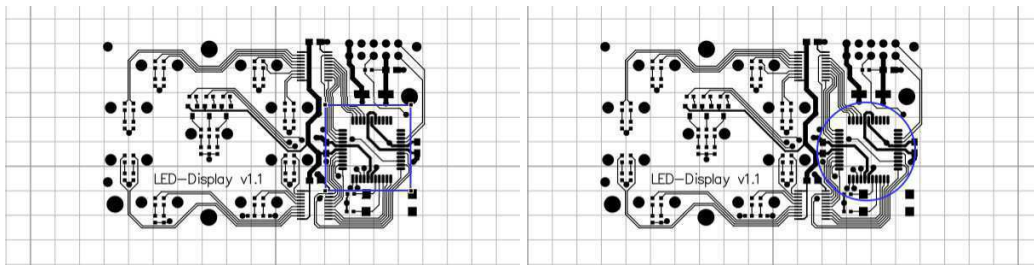
Select the contour, go to the Inspector Panel and chose a basic Filling. Also make sure that Stroke is off (stroke width = 0).



Advice: It is better to include the Contour Layer in the data of the Soldering Layer or Component Layer. Then you don't have to import the Contour Layer at all, simply move the elements from the Soldering Layer to the Contour Layer. To move the elements to another layer, simply select what you want to move, switch to the Layer-Panel and select the Contour Layer. Now press the button "Move to Layer" - that's it. Both layers have to be editable.

Creating a Rub-Out Area

There is nothing to import for a Rub-Out area. All we need is a closed graphics object, like a Rectangle, Circle, or Path. Make sure the Rub-Out layer is the only editable layer, when you start creating graphics.

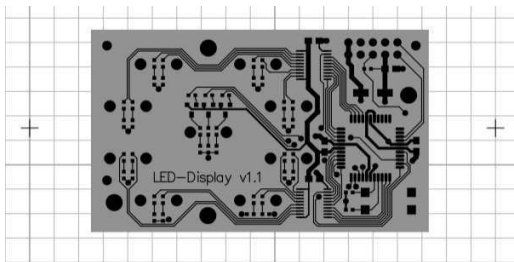


Positioning the Fitting Bolts

The Fitting Bolts are needed for double-sided boards only. They make sure that you can flip the board precisely.

Basically the fitting bolts can be located anywhere, even within the contour of the layout.

A reasonable location is to the right and left of the contour.



2.6.4 Pre-Manufacturing

This part will explain the settings of the layers (manufacturing steps), assigning tools, etc.

Most of the settings are preset in the template, some need to be set by yourself.

The table shows an overview of the layers, the strategy needed for their purpose, and a suggestion for the appropriate tool.

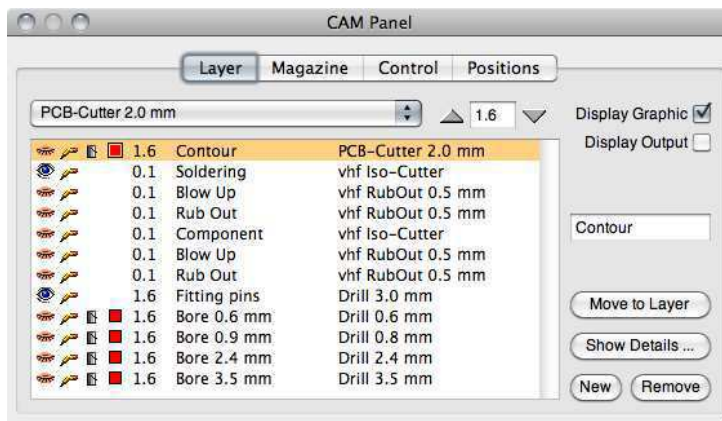
Layer / Step	Strategy / Compensation	Tool
Contour	Outside tool radius compensation. For double-sided boards, this layer should be mirrored, since it is the last thing to do after we flipped the board.	GRP/CRP Cutter or Double-Tooth Cutter depending on your board material.
Soldering	PCB Insulation. All electric potentials are separated, even if tracks have to be tightened to achieve this with the given tool.	Insulation engraving tool.
Blow Up	PCB Blow-Up. The insulation paths are widened. In narrow areas, the tool is going only as far as the space allows.	Rub-Out Cutter or other cylindrical tool
Rub Out	PCB Rub-Out. All surplus copper will be removed. If you rub-out the entire board, there is no need for a Blow-Up.	Rub-Out Cutter or other cylindrical tool
Fitting Bolts	None	Drill with the diameter of an available fitting bolt (even the shafts of broken tools can serve as fitting bolts).
Bore	None	Drill
Logo/Text	None or Inside compensation	Insulation cutter or engraving tool

The PCB Template has the default PCB magazine assigned, which contains tools suitable for prototyping circuit boards.

For each layer you have to assign an appropriate tool. If you have to modify or add new tools to the magazine, you can do this in the Magazine-Panel. The second Tab in the CAM-Panel brings you to the Tool-Magazines (see section 3.4.3 and

section 3.4.4).

Finally, below you can see how the fully assigned Layer-Panel gives you an overview of all settings and assigned tools.



Special settings of Layers

Contour Layer: If you make a double-sided board, it is important to mirror the Contour-Layer. Select the Contour-Layer and click on the button "Show Details". In the Layer-Details, the Switch "Mirror" has to be active. There is no visible change in the display, but the output will be flipped (about the fitting markers) to fit the component side.



Bore Diameter: You have to assign a drill from the magazine of appropriate diameter. You also have to set the dipping- or immersion depth of the drills.

Soldering Layer,

Component Layer: If you encounter issues with the calculation of your imported data, you can switch to a second algorithm, which is more tolerant with bad data.

In the case of our Component Layer, for example, the fillings of the ground areas are endless overlapping lines which criss-cross all over the board. If we are in control, we can export better data. Otherwise, go to the Project-Settings (see section 3.2.1), select the CAM-Settings from the Pop-Up, and check the Switch "Use Raster Algorithm".

There is a second setting "Deburring of PCB tracks", which will remove chips that could stay attached to the copper in tight corners.

Fitting Bolts: You can adjust the fitting bolts as you wish. They can even reside within the contour of your layout, if you don't mind the wholes.

A good location is just outside the contour, to the right and left of the board.

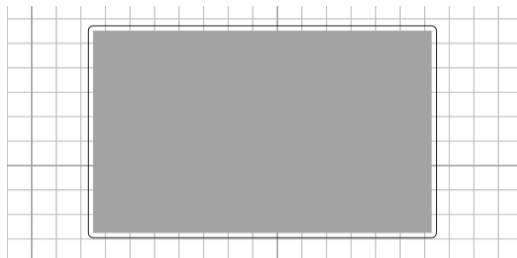
The fitting pins are only needed for double-sided boards to allow flipping of the board precisely.

Results

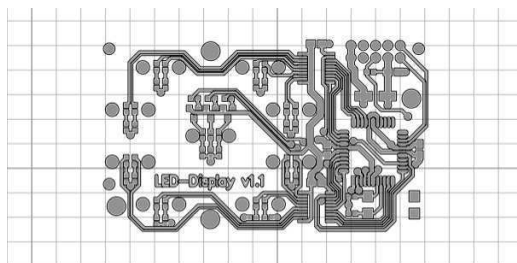
We are ready. Here is a display of the output tracks of the major layers.

You can also display the tool diameter for the display of your output. You can enable this in the Menu: Display▷ Show Tool Diameter.

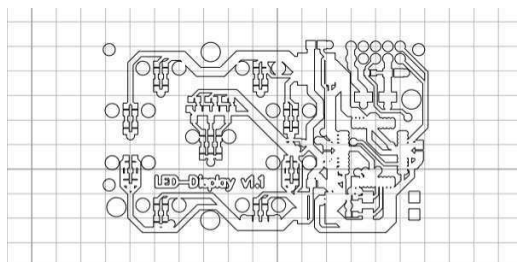
Contour Layer:



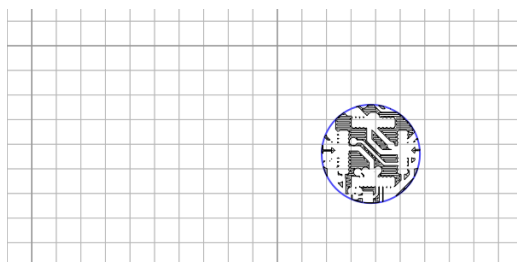
Soldering:



Blow-Up:

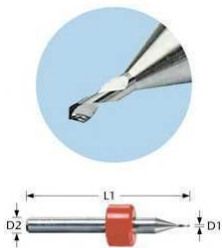

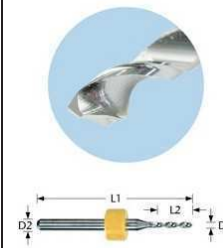
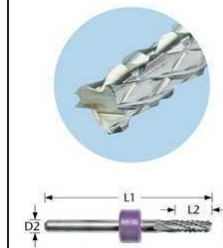


Rub-Out:



2.6.5 Tools for Prototyping

In this section we will introduce the carbide-tools applied for prototyping of circuit boards.

Insulation Engraver	Rub-Out Cutter	Drill	GRP/CRP Cutter
			
<p>This kind of tool is applied to engrave the insulation tracks.</p> <p>The tip of this tool is tapered from 0.05 to 0.7 mm with a tip angle of 90°.</p> <p>The tool is also well suited for general engraving tasks.</p>	<p>This is a shortened double tooth cutter, which reduces the risk of fracture. It is used for the Blow-Up and Rub-Out.</p> <p>This tool is an all-rounder and a perfect engraving tool in general. It is as well suited for levelling the run-out material, and for cutting the contour of low-quality circuit boards.</p>	<p>Carbide-Drills are used for all bore-holes we have to drill.</p>	<p>These PCB cutters are available as spiral-toothed or diamond-toothed.</p> <p>They are made for cutting highly abrasive material like fiber-reinforced circuit boards.</p>

If you don't use an automatic tool changer, make sure all tools are equipped with a stop ring. The ring makes it a lot faster and easier to change and adjust the tools.

You can obtain these special tools in the vhf Tool Store. Tools will be shipped internationally within a few days.

<http://www.vhf.biz/tools>.

Most tool parameters are pre-set in the PCB tool-magazine coming with Cenon. If your spindle is not capable of the high revolution, you have to reduce the lowering speed and feed accordingly.

Recommended tool parameters for drilling:

Diameter	Revolution [rev/min]	Lowering Speed [mm/s]
0.5 mm	60.000	25
0.6 mm	60.000	30
0.7 mm	55.000	35
0.8 mm	48.000	35
0.9 mm	42.000	35
1.0 mm	38.000	35
1.1 mm	35.000	35
1.2 mm	32.000	35
1.3 mm	29.000	35
1.4 mm	27.000	35
1.5 mm	25.000	35
1.6 mm	24.000	35
1.7 mm	22.000	30
1.8 mm	21.000	30
1.9 mm	20.000	30
2.0 mm	19.000	30
2.1 mm	18.000	25
2.2 mm	17.000	25
2.3 mm	17.000	25
2.4 mm	16.000	25
2.5 mm	15.000	25
2.6 mm	15.000	25
2.7 mm	15.000	25
2.8 mm	15.000	25
2.9 mm	15.000	25
3.0 mm	15.000	25

2.6.6 Manufacturing

Now we are prepared to machine the board.

Levelling the machine

For perfect results of the insulation engraving it is crucial to have the machining area leveled. There are several ways to achieve this. We will just hint at two possible options:

1. Use Leveling to measure the machining area and let the CNC-Controller compensate inaccuracies in Z. Even better is to level the surface of the base material. See section [3.5.3](#) for more information.
2. Use a cylindrical tool of sufficient diameter to level a good part of the machining area. Mount a running-out material (for example an acrylic board) to the machine table. This material can now be leveled and used to attach the circuit board. In Cenon you can simply create a rectangle with a standard filling. The run-out material is needed anyway to protect the machine table from damage while drilling or cutting.

Mounting the base material

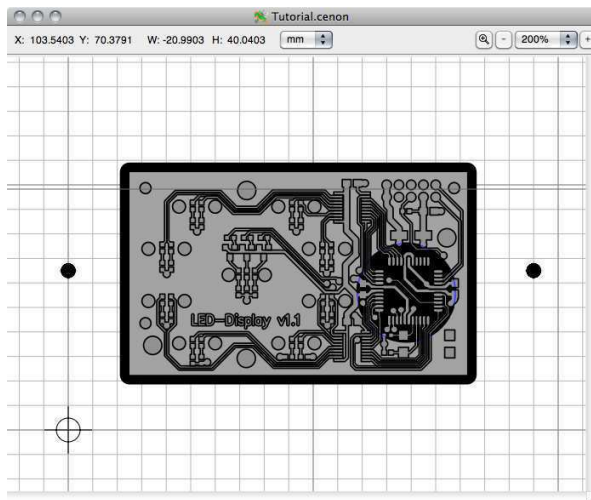
First, we tape double-sided adhesive film (DX1) to the base material. We remove the waxed protection-paper and make sure, we have no bubbles trapped under the film. Then we remove the second protective-film and tape the board onto the run-out material.

Another option is to use a vacuum table.

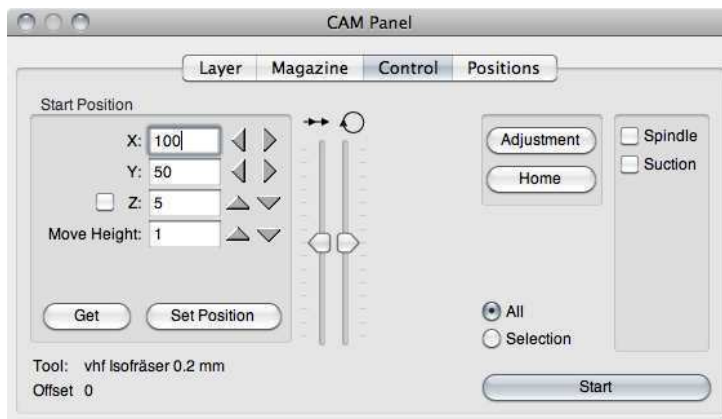
Start-Position

The first step is to move the machine to the starting position. The Start-Position is the position on the machine reflecting the location of the cross-hairs in your document.

In our example the Cross-Hairs are in the lower/left corner of the board.
 In the image below we see the cross-hairs. Additionally we see the output displayed with the effective tool diameter (Menu: Display ▸ Show Tool Diameter). This lets you anticipate pretty well the expected results after output



You set the Start Position in the Control-Panel.



The X and Y positions are straight forward, simply move the machine with the help of the arrow keys to reflect the position of the cross-hairs in your document window.

Partly visible gray lines in the Graphics window also show the machine boundaries relative to the Layout.

Each click on the arrow key will move the machine by 1/10 of the unit. If you keep the Control-Key pressed while clicking, the machine moves a full unit.

Now enter a Move Height, that you wish to maintain, lets say 1 mm. This is the Minimum Safe Altitude to fly.

Finally we have to exactly adjust the Z location.

First, we can roughly move Z down to a safe distance above the material.

1. Now, if you happen to have a surface sensor, use it.
Activate the Adjust Switch (to the left of the Z position) and move X and Y above the base material (or contact plate).
Press the arrow for Z down.
The Z axis should lower until it touches the contact or circuit board, depending on the kind of equipment. you use.
2. Here is the manual approach.
Activate the Adjustment Switch and move X and Y above the base material.
Lower Z with smallest (0.1 mm) steps until you can still see a little gap between the tool and the surface.
Place a piece of thin paper between the tool and the surface of the board.
Lower Z until the paper can't be moved any more. Stop here, that's our Z-position !

See section [3.4.5](#) for details.

To avoid engraving too deep, it is advisable to try with a Z position of about 1/10 or 2/10 mm higher first. Start engraving the Soldering Layer as a test. Stop the machine after some engraving and decide whether the insulation channels are right. Adjust Z, if necessary in small steps of about 0.02 to 0.05 mm.

Order of Output

Layers are usually processed one by one. To select layers for machining open the eye of the layer(s).

The following list shows the order of output steps for a double-sided board:

1. Engraving of the Soldering Layer
2. Engraving of the Blow-Up and Rub-Out of the Soldering-Layer
3. Drilling of the bore-diameters
4. Drilling of Fitting holes for fitting pins
5. Flip the board
6. Engraving of the Component Layer
7. Engraving of the Blow-Up and Rub-Out of the Component Layer
8. Cutting of the Contour Layer

The following list shows the order of output for a single sided board:

1. Engraving of the Soldering Layer
2. Engraving of the Blow-Up and Rub-Out of the Soldering-Layer
3. Drilling of the bore-diameters
4. Cutting of Contour Layer

For every tool change, the tool has to be adjusted. While this has to be exact for engraving tools, the drills and cutters are easy to adjust and should fit well enough by using distance rings on the tools.

Advice: To avoid a "running off" of the drills when dipping into the board, it is advisable to use a run-in material, placed on top of the board. Pressboard or resin board are good material. Make sure you drill deep enough into the run-out material to get clean holes.

Advice: In order to achieve a high lowering speed for drilling and avoiding acceleration ramps within the drilling process, set the Move Height generously.